

Gangway₁₆ - 16 PORT GANG ROLL SWITCHER

GangWay 16 Physical Specifications
 ■ Size - 19" x 5.5" x 1.7"
 ■ Weight - 5 Lbs.



GangWay16™ is a compact, easy-to-use, 16 port RS-422 Gang Roll Switcher and GPI Trigger Box.

The front panel includes a lighted button for clear indication as to the status of each machine, a gang roll button to quickly enable all machines, 3 User Preset Groups and a Tally Select button.

A front mounted RS-422 port provides a convenient connection for a jog/shuttle remote or other device. GangWay has 16 RS-422 ports on the rear panel and a rear mounted RS-422 control input.

The rear panel also includes 2 - 25 pin D-Sub connectors for GPI I/O, a power switch and an additional interface slot.

An optional interface card can act as a Master Input, connecting the GangWay16 to 10/100 Ethernet, USB, RS-232 or RS-422. This can be used to remotely change the switching configuration of the GangWay16 itself or as the source of commands for controlling connected VTRs, DDRs or Servers.

You can communicate with GangWay16 over LAN or over the internet, for remote control and switching functionality. It's ideal for remote truck or studio applications.

A new feature allows the ES-SloMo - Universal Instant Replay Controller to directly interface with GangWay16 to provide for control up to 16 RS-422 machines or server channels, using the GangWay16 as the machine interface.



GangWay16 Rear Panel

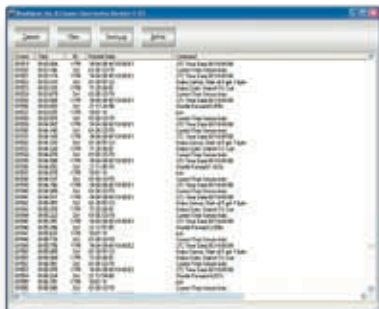
BUSALYZER - SERIAL COMMUNICATIONS ANALYZER

BusAlyzer Physical Specifications
 ■ Size - 5.5" x 3.75" x 1.25"
 ■ Weight - 1 Lb.

BusAlyzer™ is a serial communications analyzer and monitor, designed specifically for use with the P2 protocol commonly used by Sony, Panasonic and other professional VTRs, DDRs, and Video Servers. It helps you solve communication problems and remotely monitor machines.

BusAlyzer has 2 serial ports to monitor the exchange of commands and responses between a controller and a deck.

It works with a Windows-based host computer and connects over 10/100 Ethernet. The supplied software displays the time-stamped raw data.



Advanced features let you filter and decode raw messages into easy to interpret commands. Captured data can be saved for later analysis.

In another application, it can be configured to act as a 2 port serial to Ethernet converter. Pairing it with a second BusAlyzer allows you create two, bidirectional serial links over any Ethernet connection, even over the public switched internet.

The unit features a 10/100 RJ-45 Ethernet connector, 2 - 9 pin RS-422 D-Sub connectors and a DC power jack. LED indicators show status of Ethernet and serial port activity.

BusAlyzer is an invaluable tool for remote monitoring and analysis, or for use as an RS-422 to Ethernet converter. Either way you use it, it's a innovative device that you'll wonder how you got along without.