

## MCS-3000 Series Interface Cards

### MCS-3000 Series USB Interface Card

This plug in card option for the MCS-3000 Series – Media Command Station allows connection to computers via USB.



Use our new USB interface and software to adapt the Media Command Station to work efficiently with virtually any application. Software keyset examples are included for popular audio, video and animation programs.

Our smart USB driver knows which application is running in the foreground and switches keysets automatically for seamless control of key commands, mouse clicks and macros. This innovative application is the first to provide this combined with programmable MIDI control all over a single USB connection. Windows 2000, NT, Me, XP and MAC OS9, OSX.

*New Mac OSX support for MCS-ClipShot now available.*

### MCS-3000 Series RS-232 Interface Card

The addition of this plug in card for the MCS-3000 Series lets you configure your Media Command Station for direct computer control. Simply plug the interface card into one of the slots in a MCS-3000, MCS-3400 or MCS-3800 and you're in control. Baud rate is adjustable.

### MCS-3000 Series 9-Pin/RS-422 Interface Card

This card provides direct 9-Pin control of professional VTR's and DDR's, or it can be used to interface your Command Station directly to a serial port on your computer. Commands from a host computer can be passed through the MCS and be directed to the individual machines.

### MCS-3000 Series Quad 422 Card

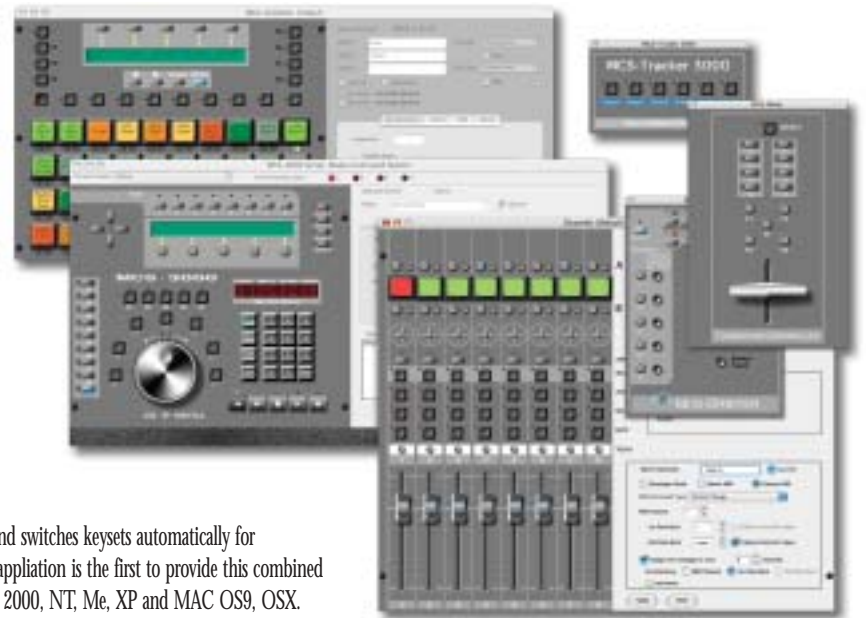
This card allows connection of up four professional VTR's or DDR's for control of transport, track arming, locates and other functions. Commands from a host computer can be passed through and directed to individual machines. With the addition of the Quad 422 Card, the MCS is not only a remote for your NLE or broadcast system, but also an interface for multi-machine control.

### MCS-3000 Series Ethernet Interface Card

This new interface card provides a direct 10/100 ethernet connection for controlling network based applications or situations where a long cable run is required. It simplifies the connection to your computer or LAN, and keeps the clutter of cables on your desktop to a minimum.

### MCS-3000 Series GPI Interface Card

This plug in card for the MCS-3000 Series – Media Command Station interfaces to any device that needs a General Purpose Interface (switch closure) connection. It provides eight GPI Outputs and one GPI input. Simply install the interface card into a slot in the MCS-3000, MCS-3400 or MCS-3800.



## unequal led interfacing flexibility

As you can see, MCS-3000, MCS-3400 and MCS-3800 Media Command Stations have a variety of interface types to work in virtually any application. Most MCS-3000 Series expansion options interface via our internal bus and connect with a modular cable.

Built in MIDI ports, a SMPTE and MTC reader are included. Two additional interface card slots provide you with the ability to adapt the controller to your requirements. Easy to install interface cards provide additional functionality with various applications that include direct support. Contact your JLC Cooper representative to discuss specific interfacing requirements for your specific applications.

*Media Command Station Rear View shows MIDI In/Out, JLC Expansion Port, SMPTE In and Two Expansion Card Slots for unequal interfacing flexibility.*

