

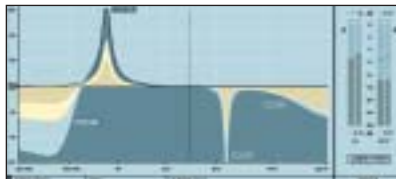


**POWERCORE  
FIRE WIRE**

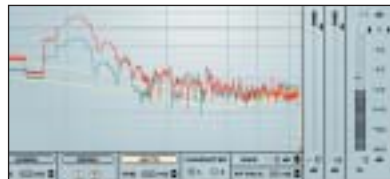
**External Power - PowerCore FireWire**

PowerCore FireWire provides significantly more power than the PCI-version, with even faster DSPs and more RAM. This version is ideal to run extreme high-end processes and for laptop users with limited connection busses. Up to 2 FireWire units can be used on one 400 MBit FireWire bus.

**Extra included plug-ins compared to PowerCore Element:**



**DYNAMIC EQ - EQ for mixing and mastering**  
Dynamic EQ is a new tool for any mixing or mastering situation. This virtual processor eliminates the shortcomings of static EQ by providing a dynamically applied equalization.



**DENOISE**  
removes broadband noise, from tape hiss to static environmental noise. The Denoiser is fingerprint-based and offers manual adjustment for very precise and predictable processing results.



**CHARACTER - adaptive sound shaping solution**  
The Character™ plug-in is based on an Intelligent Adaptive Filtering (IAF) technology from Noveltech, and the processing affects both the frequency response and the dynamical properties of an audio source in a highly time-varying sense.

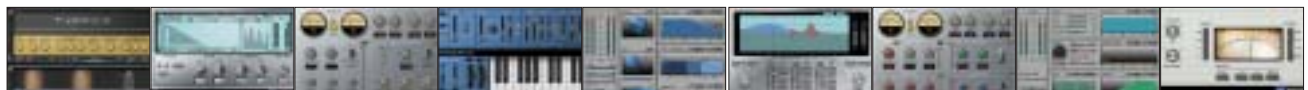


**FILTROID - dual filterbank**  
With its dual filters and extensive modulation capabilities, Filtroid brings the sound of analog filter banks to the PowerCore platform. The filters can be used in series or parallel for the utmost creative control and extreme filter effects.



**MASTER X3 - Virtual Finalizer™**  
The knock out punch for any mixes or masters. Master X3 is the virtual incarnation of the TC Electronic Finalizer™, the standard mastering processor in the pro audio field. Master X3 expedites the mastering process by integrating several phases of mastering into a single, easy to use interface.

**Updated Product Box**



**Hardware comparison**

	PowerCore Element	PowerCore Compact	PowerCore FireWire
DSPs	4 x 100 MHz	2 x 150 MHz	4 x 150 MHz
S-RAM	4 x 128 kWords	2 x 512 kWords	4 x 512 kWords (1.5 MB!)
Power PC	1 x 200 MHz PowerPC	1 x 266 MHz PowerPC	1 x 266 MHz PowerPC
D-RAM	8 MB	8 MB	8 MB
Size	PCI-card	Portable Design	19" Box
Use	Desktop	Laptop or Desktop	Laptop or Desktop